



Mahatma Education Society's

Pillai HOC College of Engineering and Technology, Rasayani

7.1.1 Institution has initiated the Gender Audit and measures for the promotion of gender equity during the last five years.

Specific facilities provided for women in terms of

a. Safety and security

Weblink:

a) CCTV Camera

<https://phcet.ac.in/about/infrastructure-and-facilities/cctv-camera/>

b) First Aid Room

<https://phcet.ac.in/about/infrastructure-and-facilities/first-aid-room/>

PHCET treats safety and security of its students, faculty and staff on priority basis. For maintaining Safety and Security of girl students and Woman faculty and staff, Women's grievance redressal cell committee has been constituted. PHCET's Internal Complaints Committee stays active and is alert all the time to prevent any sexual abuse or harrasments to female students and workers. PHCET have constituted different committees like Anti-Sexual harassment and Anti-ragging Committee to deal with any dereliction.

There is 24/7 security on the campus; both male and female security guard the premises. Provision of standby power supply ensures protection against power outages. Lifts in the college are automated to move to the nearest floor in order to avoid people getting trapped in the lifts during unexpected and sudden power outages. CCTVs are deployed across the campus for round the clock surveillance.

Safe drinking water, pedestrian friendly internal roads, green landscaping, natural light in classrooms, industrial standard building structure, high ceiled classrooms with natural light and ventilation, fresh air, a very clean environment, etc. provide additional security and help avoid many health hazards. The transport system that the college provides on a subsidised rate for students and free for the faculty and staff provides considerable security with respect to travel related accidents and other difficulties that people encounter on a daily basis.

PHCET has a first aid room with resting facility and doctor on call. In case of any major case that cannot be handled in-house, the patient is immediately taken to a hospital close by. PHCET considers providing best possible medical help under the prevailing conditions is its bounden duty with no questions asked.



Figure 1: CCTV for surveillance



Figure 2.a: First Aid Room



Figure 2.b : First Aid Room



Figure 3.a: Women Development Cell and Anti Sexual Harassment Cell



Figure 3.b: Women Development Cell and Anti Sexual Harassment Cell

b.Counselling

*Weblink*Counseling: <https://phcet.ac.in/students/counseling-unit/>

Availability of a qualified counsellor and a counselling room makes it convenient for students, faculty and staff for personal counselling. If any student, faculty or staff faces any issues regarding their academics, profession, personal life they are always welcome to seek advice or undergo counselling sessions from the counsellor. The privacy of the individual is sacrosanct and inviolable.

PHCET has implemented TGMS(Teacher Guardian Mentoring System) where each teacher mentors 20-25 students weekly basis to identify problems they face in academics and personal life. Through TGMS, students open up their problems and faculty try to solve them. If a student needs any further assistance then faculty approaches the counsellor to handle the problem.

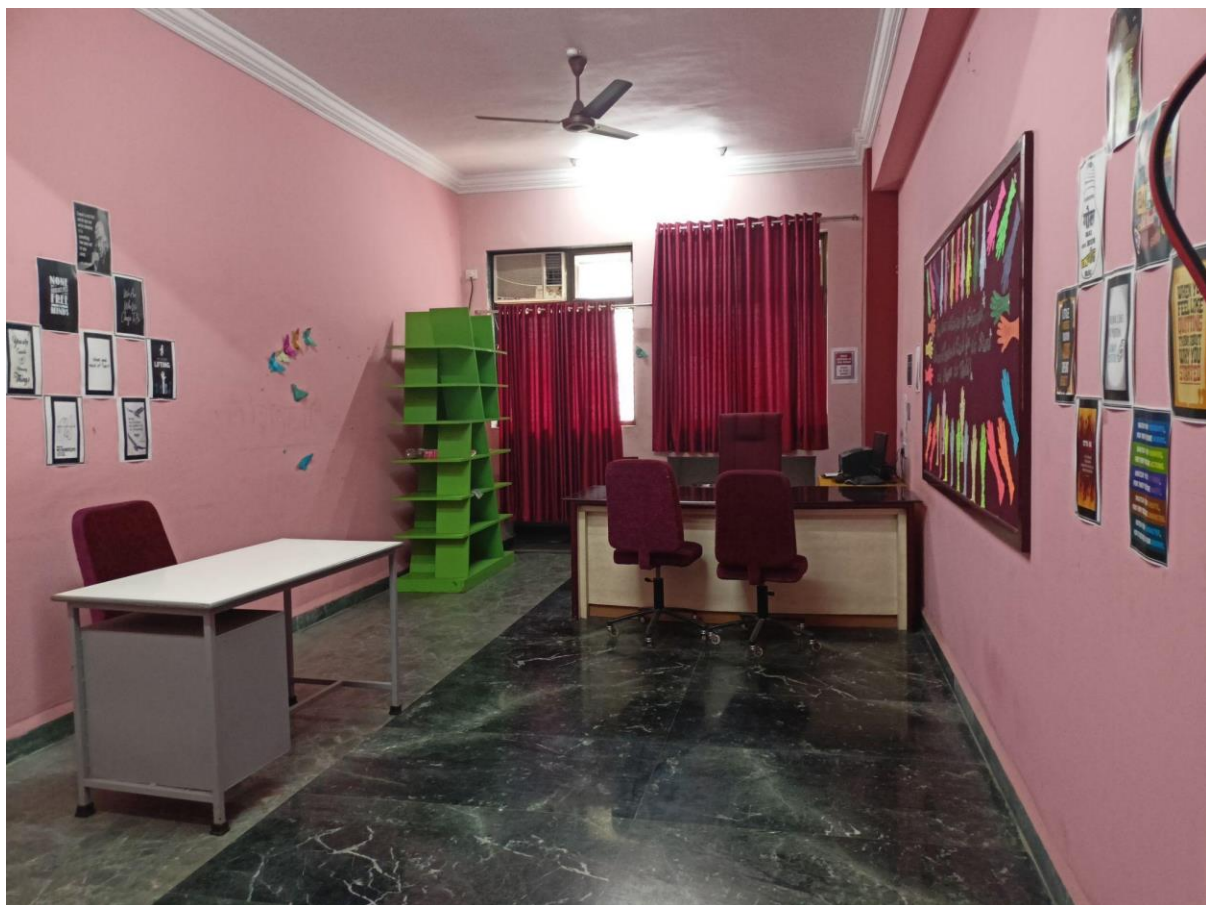


Figure 1: Counselling Centre



C. Common Rooms

Weblink Common Rooms:

<https://phcet.ac.in/about/infrastructure-and-facilities/common-room/>

PHCET has provided an adequate number of wash rooms for girls on every floor and a common room with facilities for resting. If any student, faculty or staff is unwell they can use the facility of the common room to take rest during college hours. People who are differently-abled and those who suffer from temporary setbacks due to accidents, etc. are given the support needed. PHCET provides special needs for students who are unwell and injured. Friendliness and compassion are part of the ethos of PHCET.



Figure: Girls Common Room

E. Any other relevant information

*Weblink*Bus Facility:

<https://phcet.ac.in/about/infrastructure-and-facilities/bus-facility/>

PHCET provides transport on a subsidized rate for students and free for the faculty and staff and provides considerable security with respect to travel related accidents and other difficulties that people encounter on a daily basis. The bus Arrives and departs at fixed timings to ensure faculty and students are never late.



Figure: College Bus



Figure: College Bus

Ambulance for emergency services

Emergency medical care and first-aid is available in the campus with one Medical Practitioner and one Nursing Assistant. General medicines are made available in the center. First-aid boxes with all accessories are kept in all laboratories where moving machinery is installed and other strategic locations.

An Ambulance with all facilities is available in the institute for emergency services. In case of emergency, students will be taken to the Hospital for treatment through standby ambulance service that is available 24/7.


Many multi specialty Hospitals are located at a distance of 500 meters at Mohpada and can be reached within 5 minutes. The Institute refers all emergency cases to these hospitals.

Principal, Doctor, and staff take care of the medical complaints of students and pass on information to parents.



AMBULANCE
PATIENT TRANSPORT

WOMEN INVESTIGATOR SOCIETY
PILLAI GROUP OF INSTITUTIONS
REGISTRATION & CLINICAL TRAINING & RESEARCH SOCIETY
ESTABLISHED - 1987 (REVISED) - 2004 - 2010
WWW.PGIIA.AC.IN

 GPS Map Camera



Rasayani, Maharashtra, India
V5VG+5P2, HOC Colony, Rasayani, Maharashtra
410207, India
Lat 18.89297°
Long 73.17644°
21/10/22 04:02 PM GMT +05:30



AMBULANCE

MAHATMA EDUCATION SOCIETY
PILLAI GROUP OF INSTITUTIONS

GPS Map Camera

Rasayani, Maharashtra, India
V5VG+5P2, HOC Colony, Rasayani, Maharashtra
410207, India
Lat 18.892927°
Long 73.176363°
21/10/22 04:05 PM GMT +05:30

